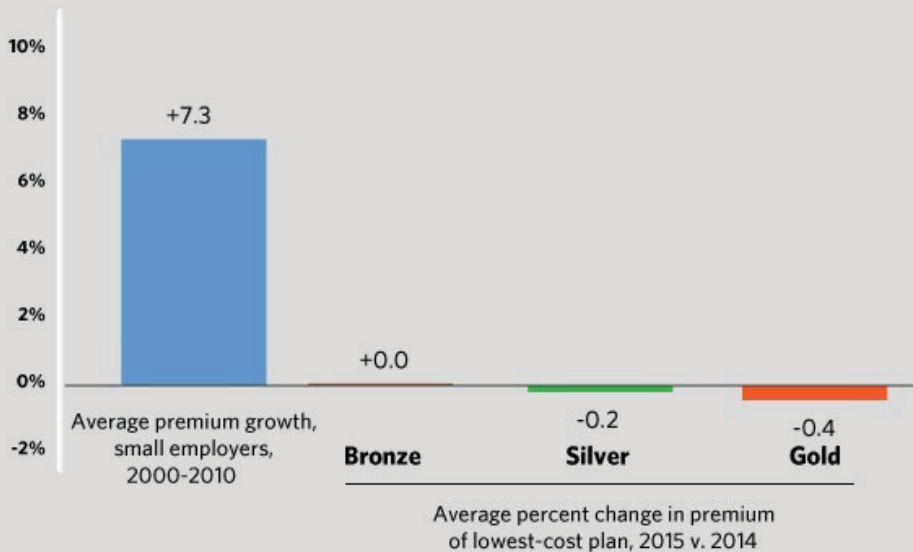


SBE NEWS ALERT

Chart of the Week: SHOP Marketplace Premiums Flat in 2015

CHART OF THE WEEK

ON AVERAGE ACROSS 32 STATES, SMALL BUSINESSES WILL SEE PREMIUMS FOR THE LOWEST-COST SHOP MARKETPLACE PLANS THAT ARE THE SAME OR LOWER THAN IN 2014



SOURCE: Kaiser Family Foundation; SHOP Marketplace Public Use Files; Census Bureau; CEA calculations.

By Natale Goriel

Editor's note: This blog is co-authored by Matt Fiedler senior economist on the Council of Economic Advisers and Matt Siegler senior policy analyst for the White House Domestic Policy Council. The blog first appeared at WhiteHouse.gov on November 24, 2014.

On November 15, the Health Insurance Marketplace opened for the 2015 enrollment season, giving current Marketplace enrollees a chance to compare their options for 2015 and others the chance to think about purchasing affordable coverage through the Marketplace for the first time.

Individuals can find a plan that meets their needs and their budget at HealthCare.gov.

But November 15 also saw the beginning of online shopping through the Small Business Health Options Program (SHOP). Historically, small businesses have paid as much as 18 percent more than their larger competitors for the same coverage, reflecting high broker fees, administrative costs, and other factors.

SHOP tackles these problems by creating a competitive marketplace where small businesses can shop for coverage that meets their needs via a convenient online application. Many small businesses who purchase coverage through SHOP are also eligible for tax credits that cover up to 50 percent of premium costs. In addition, under the Af-

fordable Care Act, small businesses cannot be charged more for employing women, people with pre-existing conditions, or for operating in blue collar industries like construction or roofing.

Businesses seeking coverage on the SHOP Marketplace in 2015 will find that, on average across the 32 States where the Federal government operated the SHOP Marketplace in both 2014 and 2015, the premium for the lowest-cost bronze, silver, and gold policies has remained steady or declined slightly relative to 2014. The premium for the median policy within each metal tier also saw very slow growth on average, rising just 2.1 percent for bronze plans, 0.7 percent for silver plans, and 1.6 percent for gold plans. On average across the States where the Federal government is operating

Continued on page 5

SMALL BUSINESS EXCHANGE

SBE OUTREACH SERVICES

With 1.5 million businesses in our database, SBE is California's #1 source for diversity outreach.

Advertisements

Placed in the Small Business Exchange newspaper, SBE Today newsletter, and online at www.sbeinc.com

Faxed and Eblast Solicitations

Targeted mailings sent to businesses per your criteria.

Telemarketing

Telephone follow-up calls that follow a script of 5 questions you create.

Computer Generated Reports

Will fit right into your proposal, along with a list of interested firms to contact.

Contact Info:

703 Market Street, Suite 1000

San Francisco, CA 94103

Email: sbe@sbeinc.com

Website: www.sbeinc.com

Phone: (415) 778-6250, (800) 800-8534

Fax: (415) 778-6255

Publisher of
Small Business Exchange
weekly newspaper

California Sub-Bid Request Ads

WEST BAY BUILDERS INC. is requesting bids from **DVBE** subcontractors, suppliers & truckers for the following project.

SOTA- AAS High School Modernization Project No. 11522
555 Portola Avenue, San Francisco, CA 94102
Owner: San Francisco Unified School District

Bid Date: 12/16/14 @ 2:00 PM Estimate: \$23,500,000 3% DVBE Goal

Scope: Comprehensive modernization and Interim Housing of School of the Arts and Academy of Arts and Sciences High School to address issues of accessibility, educational programming and renovation of building materials and systems. Including Building A- Academic Building, Building B- Gymnasium, Building C- Music Building; Building D - Cafeteria; and miscellaneous sitework items (parking lots, ramps, sidewalks, etc.) Site and building improvement to address ADA compliance including site-built concrete ramps, existing stair and handrail modifications, two new LU/LA elevators, new gates and hardware. Reconfiguration of interior spaces including new wall partitions, doors, hardware, interior windows, casework, wall, floor and ceiling finishes, and specialties and equipment. Repurposing of interior spaces to create a new Black Box Theater, Scene Shop, Vocal Music, Instrumental, and Piano Studio Suites. Replacement and upgrades to plumbing, mechanical, electrical power and lighting systems. Expansion, replacement and upgrades to data and fire alarm campus-wide system. Hazardous material abatement and other misc work.

TRADES NEEDED (but not limited to): Selective Demolition; Site Preparation and Plant Protection; Earthwork; Trenching, Backfilling, and Compacting; Subgrade Preparation and Base Material; Sanitary Sewage Systems; Asphalt Paving and Surfacing; Site Concrete; Painted Pavement Markings; Tactile Warning Surfacing; Chain Link Fencing; Ornamental Fencing; Parking Bumpers; Concrete Forms and Accessories; Concrete Reinforcement; Cast-In-Place Concrete; Polished Concrete Finishing; Hydraulic Cement-Based Underlayment; Concrete Rehabilitation; Structural Steel; Steel Deck; Cold Formed Metal Framing; Metal Fabrications; Metal Ladders; Expansion Joint Cover Assemblies; Finish Carpentry; Plastic-Laminate Faced Architectural Cabinets; Fiberglass Reinforced Plastic Paneling; Self-Adhering Sheet Underlayment; Bituminous Sheet Waterproofing; Building Insulation; Roof and Deck Insulation; Building Envelop Underlayment; Fluid Applied Moisture Treatment; Below Grade Vapor Barrier; Standing Seam Sheet Metal Roofing; Metal Wall Panels; Aluminum Composite Panels; SBS Modified Bitumen Membrane Roofing; PMMA Waterproofing Liquid Applied System; Preparation for Re-Roofing; Sheet Metal Flashing and Trim; Elastomeric Sheet Flashing; Cementitious Fireproofing; Firestopping; Joint Sealants; Steel Doors and Frames; Flush Wood Doors; Access Panels; Overhead Coiling Doors; Metal Sound Control Door Assemblies; Aluminum Framed Entrances and Storefronts; Unit Skylights; Door Hardware; Glazing; Metal Support Systems; Gypsum Board; Ceramic Tile; Acoustical Ceilings; Integrated Ceiling System; Wood Floating Floors; Resilient Flooring; Resilient Athletic Flooring; Epoxy Flooring; Carpet Tile; Acoustical Wall Panels; Cementitious Wood Fiber Wall Panels; Acoustical Tack Board; Painting; Visual Display Units; Display Cases; Solid Color Reinforced Composite Toilet Compartments; Fixed Wall Louvers; Corner Guards; Graphics and Signage; Parking Lot Signage; Metal Lockers; Fire Extinguishers and Cabinets; Toilet Accessories; Tension Wire Grid; Stage Curtains; Platforms and Seating; Audio Visual Systems; Projection Screens; Projector Mounts; Gymnasium Wall Padding; Shop Equipment; Laboratory Fume Hoods; Music Education Storage Casework; Entrance Floor Grilles and Frames; Roller Window Shades; Telescoping Bleachers; Sound Conditioned Rooms; Digital Video Surveillance System; Fire Alarm System; Wet Pipe Sprinkler System; Hydraulic LU/LA Elevators; Vertical Lifts; Evacuation Chairs; Mechanical; Electrical;

We are signatory to both the Carpenters Collective Bargaining Agreement and the Laborers Collective Bargaining Agreement. Certification of insurance for General Liability and Workers' Compensation are required. A Waiver of Subrogation will also be required with all Subcontract Agreements. Subcontractors' faithful performance and payment bonds in the amount of the subcontract price will be required, unless contract is under \$200,000. Reasonable market rate bond premium will be reimbursed by West Bay Builders, Inc.

WBB is willing to discuss breaking down bid items into economically feasible units for minority participation. Our estimating department is available for assistance with bonding, lines of credit, insurance, equipment, supplies and/or materials. The Small Business Administration (www.sba.gov), the California Dept. of General Services (www.dgs.ca.gov) and U.S. Dept. of Transportation Office of Small and Disadvantaged Business Utilization (www.osdbu.dot.gov) may also be able to offer financial assistance and/or information regarding insurance and bonding. Plans and specs may be viewed in our office at 250 Bel Marin Keys Blvd., Bldg. A, Novato Monday through Friday from 7:30 AM to 4:30 PM or can be e-mailed upon request.

WEST BAY BUILDERS, INC. IS AN EQUAL OPPORTUNITY EMPLOYER

Contact: **Dalia Nieto** • (415) 456-8972 • FAX: (415) 459-0665 • EMAIL: dalian@westbaybuilders.com

REQUESTING BIDS FROM QUALIFIED DBE SUB-CONTRACTORS AND SUPPLIERS FOR THE FOLLOWING PROJECT:

Niles Blvd. Bridge Replacement Project
City of Fremont, City Project No. 8460, Bid Date: December 9, 2014 at 2:00 pm

We hereby encourage responsible participation of local Disadvantaged Business Enterprises (14.5% Goal), and solicit their subcontractor or material quotation for the following types of work. This is a highway project with the typical items of work associated, but not limited to: Prepare Storm Water Pollution Prevention Plan, Temporary Fiber Roll, Temporary Silt Fence, Temporary Concrete Washout, Temporary Construction Entrance, Temporary Check Dam, Temporary Drainage Inlet Protection, Rain Event Action Plan, Storm Water Annual Report, Construction Area Signs, Traffic Control, Remove Stripe and Markers, Minor Concrete, Remove Roadside Sign, Remove MBGR, Remove Minor Concrete, Roadside Sign, Cold Plane Asphalt Concrete Pavement, Bridge Removal, Clear and Grub, Roadway Excavation, Lead Compliance Plan, Structure Excavation, Structure Backfill, Ditch Excavation, Imported Borrow, Aggregate Base and Sub Base, Hot Mix Asphalt, Tack Coat, Steel Casing, CIDH, Furnish Piling, Drive Pile, Prestressing CIP Concrete, Structural Concrete, Joint Seal Assembly, Rebar, Reinforced Concrete Pipe, Corrugated Steel Pipe, Rock Slope Protection, Miscellaneous Metal, Delineator and Markers, MBGR, Chain Link Railing, Pedestrian Barricade, Concrete Barrier, Transition Railing, Stripe and Markers, Lighting, Landscaping, Construction Equipment and Rentals, Trucking.

C.C. Myers, Inc. is willing to break down items of work into economically feasible units to encourage DBE participation. If you are interested in any of this work, please provide us with a scope letter or contact us immediately. Plans and Specifications are available on the C.C. Myers, Inc. Sharepoint Site, please contact CCMI for log in information.

Conditions or exceptions in Subcontractor's quote are expressly rejected unless expressly accepted in writing. Subcontractor and Supplier quotes are required 24 hours prior to the bid date to enable thorough evaluation.



C.C. Myers, Inc.

3286 Fitzgerald Rd. • Rancho Cordova, CA 95742
 916-635-9370 • Fax 916-635-1527

Each Subcontractor shall be prepared to submit faithful performance and payment bonds equal to 100% of their quotation. The Contractor will pay standard industry rates for these bonds.

Contact C. C. Myers, Inc. for assistance with bonds, insurance, lines of credit, equipment, supplies or project plans and specifications.
C.C. Myers, Inc., is a Union Contractor.
AN EQUAL OPPORTUNITY EMPLOYER

Sub Bids Requested From Qualified MBE, WBE, DBE Subcontractors & Suppliers for

City of Woodland - Water Transmission
Main West, Surface Water Local Facilities
CIP #12-05

Location: Woodland, CA

Bid Date: December 4, 2014 @ 2:00 PM

McGuire and Hester is seeking qualified subcontractors in the following trades: cathodic protection; trucking; sawcutting; SWPPP; clearing & grubbing; survey; traffic control; electrical; micro-surfacing; and striping.

We will pay up to and including one and one-half percent (1-1/2%) of your bonding cost. Certification assistance is available, as well as viewing plans and specs.

McGuire and Hester

9009 Railroad Avenue • Oakland, CA 94603

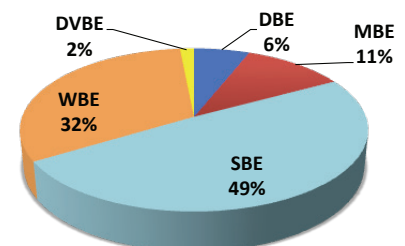
Phone: (510) 632-7676 • Fax: (510) 562-5209

Contact: **Dave Koerber**

An Equal Opportunity Employer

AUDIENCE PROFILE

Small Business Exchange, Inc.



California Sub-Bid Request Ads



C. Overaa & Co - General Building Contractor
 200 Parr Blvd., Richmond, CA 94801
 510 234-0926, Fax: 510 237-2435 - www.overaa.com

We request bids from all qualified subcontractors and suppliers for the following Project:

SOTA-AAS High School Modernization

Located in San Francisco, CA

Bid Date: December 16, 2014 before 2:00 PM

Estimator: TJ Sekel

Project Description: The Project includes but is not limited to: to Comprehensive modernization and Interim Housing of School of the Arts and Academy of Arts and Sciences High School to address issues of accessibility, educational programming and renovation of building materials and systems. Including Building A – Academic Building, Building B - Gymnasium, Building C – Music Building; Building D - Cafeteria; and miscellaneous sitework items (parking lots, ramps, sidewalks, etc.). Site and building improvements to address ADA compliance including site-built concrete ramps, existing stair and handrail modifications, two new LU/LA elevators, new gates and hardware. Reconfiguration of interior spaces including new wall partitions, doors, hardware, interior windows, casework, wall, floor and ceiling finishes, and specialties and equipment. Repurposing of interior spaces to create a new Black Box Theater, Scene Shop, Vocal Music, Instrumental, and Piano Studio Suites. Replacement and upgrades to plumbing, mechanical, electrical power and lighting systems. Expansion, replacement and upgrades to data and fire alarm campus-wide system Hazardous material abatement and other misc. work.

Trades include, but are not limited to: earthwork, fences & gates, concrete, cast-in-place concrete, rebar, structural steel, steel deck, misc. metals, carpentry, FRP paneling, architectural cabinets, waterproofing, insulation, flashing & sheet metal, roofing, fire stopping, joint sealers, doors, frames & hardware, skylights, glass & glazing, gypsum, acoustical ceilings, flooring, resilient athletic flooring, ceramic tile, painting and coatings, toilet & bath accessories, metal lockers, visual display units, FEC, projection screens, corner guards, signage, display cases, shop equipment stage curtains, roller window shades, telescoping bleachers, security system, fire protections system, hydraulic elevators, vertical lifts, HVAC, plumbing, mechanical, electrical work, fire alarm systems, and telecommunications.

All Bidders are hereby notified that the District has a Project Labor Agreement (PLA) in effect on the Project and all contractors and subcontractors bidding this project will be required to comply with the PLA.

All General Contractors and Mechanical, Electrical and Plumbing Subcontractors must be prequalified in order to bid on this project.

Three percent (3%) Participation Goal for Disabled Veteran Business Enterprise (DVBEs).

The estimated cost for this work is \$23.5 million

Project Location: 55 Portola Avenue, San Francisco, CA 94102

Plans and specifications may be procured from the ARC NORTHERN CALIFORNIA - BID SERVICES

945 BRYANT STREET, SAN FRANCISCO, CALIFORNIA 94103. Contact: Priyantha De Pinto Tel: 415 537 2235 or Teddy Salonga Tel: 415 537 2235 Fax: 415 348 0684 Email: sf@e-arc.com Documents are also available for viewing in our plan room at 200 Parr Blvd., Richmond, CA, and at our iSQFT site, login is required. Contact jasonc@overaa.com for iSQFT access. Please call for additional information about project and/or project documents.

We encourage bids from all Subcontractors/Suppliers including DBE/MBE/WBE/SBE/DVBE bidders. We are an equal opportunity employer. We offer to assist you with bonding, credit, and insurance. We are signatory to both Carpenters and Laborers. Subcontractors will be required to sign the Overaa Standard Subcontract Agreement, which includes the right for Overaa to require subcontractors to furnish a faithful performance and labor bond, in a form and from a surety acceptable to Overaa, in the amount of 100% of the Subcontract price. Subcontractors will be required to comply with all subcontract insurance requirements, which includes providing a waiver of subrogation endorsement to their worker compensation insurance. The Overaa Standard Subcontract Agreement is available for viewing at our website: www.overaa.com. Overaa utilizes the environmentally-friendly Tectura electronic invoicing and payment system to streamline and expedite subcontractor invoicing and payment. Please contact our office if you would like more information.

RGW Construction Inc. is seeking all qualified DBE (Disadvantaged Business Enterprises) for the following project:

**Niles Boulevard Overhead Bridge Replacement
 City Project NO. 8460 (PWC)**

Federal Aid Project No. BRLZ-5322(019)

Engineer Estimate:

\$9,200,000 - 330 Working Days

Goal: DBE 8%

Bids: December 9th, 2014 @ 2:00 PM

Requesting Sub-quotes for (including but not limited to): Fabric and Oils, Electrical Material, Construction Area Signs, Traffic Control, Cold Plane, Demolition/Bridge Removal, Clear & Grub, Roadway Excavation, Structure Excavation/backfill, Landscaping, Hydroseeding, Erosion Control, Irrigation, Aggregate Base, Asphalt Paving, AC Dike, Grinding, Pile Driving, CIDH Piles, Prestressing Concrete Cast-in-Place, Structural Concrete, Concrete Block & Masonry Retaining Wall, Joint Seal, Reinforcing Steel, Signs Roadside, Rock Slope Protection, Concrete Curb & Sidewalk-Misc., Fencing, Survey & Historical Monument, Object Marker, MBGR, Metal Railing, Concrete Barrier, Thermo-plastic & Painted Traffic Stripe & Marking, Pavement Marking, Signal and Lighting, Message Signs, Lighting & Sign Illumination, Surveyor, SWPPP Planning, Water Truck, Sweeper, Storm Drain (Underground), & Trucker.

Scope of Work: Construction of a new cast-in-place pre-stressed concrete box girder bridge, removal of the existing bridge, clearing and grubbing, installation of AC pavement, concrete curbs, gutters and sidewalk, storm drainage treatment systems, street lighting, signing and striping and landscaping.

RGW is willing to breakout any portion of work to encourage DBE participation. Contact us for a specific item list.

Plans and specs are available at Arc Document Solutions, 1654 Centre Pointe Drive, Milpitas, CA 95035, or through Planwell at <http://www.earc.com/ca/milpitas>, Phone (408) 262-3000. For any questions, including bonding, lines of credit, insurance or equipment and material suppliers contact David Aboujudom 925-606-2400 david@rgwconstruction.com. Subcontractors should be prepared to submit payment and performance bonds equal to 100% of their quotation. For bonding and other assistance, please call.

RGW Construction, Inc.

Contractors License A/B 591940
 550 Greenville Road • Livermore, CA 94550 • Phone:
 925-606-2400 • Fax: 925-961-1925
 An Equal Opportunity Employer

Looking for Subcontractors, Vendors, and Suppliers?

Advertise your Sub-Bid Requests in the **Small Business Exchange.**

With a monthly readership of 75,000, SBE reaches a diverse audience, cutting across ethnic and gender lines as well as traditional industry segments.

Call 1-800-800-8534
 or visit us at www.sbeinc.com



California Sub-Bid Request Ads

**Project: I- 215 at Newport Road Interchange Improvements
City of Menifee**

**County of Riverside Transportation Dept.
Project No. B5-0682**

****THIS PROJECT HAS A 3% DBE Goal ****

BID DATE: Wednesday Dec. 10, 2014 · BID TIME: 2:00 P.M.

Please respond by 5:00 p.m., Dec 9th, 2014

We are seeking sub-bids from DBE subcontractors/subconsultants, and material and/or equipment suppliers in the areas of work included in, but not limited to: Construction Area Signs, PCMS, Temp Railing (Type K), Bridge Removal, Clear & Grub, Structure Ex & Backfill, Imported Borrow, Rock Blanket, Landscape & Irrigation, Hydromulch, Hydroseed, Compost, Class 2 Agg Base, Hot Mix Asphalt, Liquid Asphalt, PCC Materials, Joint Seal, Isolation Joint Seal, Steel Piling, CIDH Piling, Prestressing, Structural Concrete, Minor Concrete (Minor Structure), Fractured Rib Texture, Bar Reinforcing Steel (Bridge, RW, Box Culvert), Shotcrete, Sign Panels, Roadside Signs, Pipe Culvert, RCP, Underground, Rock Slope Protection, Fencing, Midwest Guardrail System, Concrete Barrier, Striping & Marking, Electrical, Sweeping, Trucking.



9685 Via Excelencia, Ste 200 • San Diego, CA 92126

Phone: (858) 536-3100 • Fax: (858) 586-0164

e-mail inquiries to: estimating@coffmanspecialties.com

Coffman Specialties, Inc. is signatory to Operating Engineers, Laborers, Teamsters, Cement Masons and Carpenters unions. Quotations must be valid for the same duration as specified by the Owner for contract award. Insurance and 100% Payment & Performance Bonds will be required. We will provide assistance/advice with obtaining Bonds/Insurance/Credit. Waiver of Subrogation will be required. Plans are available through RCTD and our San Diego Office. We are an EOE & seriously intend to negotiate with qualified firms. Non-DBE Subs/Suppliers: Indicate 2nd tier UDBE participation offered on your quotation as it will be evaluated with your price.

Shimmick Construction Company, Inc.

DBE Subcontractor/Supplier Bids Requested For:

San Francisco Bay Area Rapid Transit District

Construction of Hayward Maintenance Complex Project Site, Track and Systems

Contract No. 01RQ-120

Bid Date: December 16, 2014 at 2:00PM

Fax all quotes to 510-777-5099

Requesting certified DBE Subcontractor and Supplier Quotes on **Safety, Pilings, Pipe, Fencing, Traffic Count, Clearing & Grubbing, Roadway Excavation, Grading, Embankment Construction, Aggregate Base, Asphalt Concrete, Paving Asphalt, Cast-In-Drilled-Hole Concrete Piling, Concrete Structure, Minor Concrete Structure, Reinforcing Steel, Railroad Work, Rail Vehicle/Railroad Quality Assurance Inspection, Railroad Track Inspection, Reinforced Concrete Pipe, Plastic Pipe, Corrugated Steel Pipe Inlet & Riser, Corrugated Steel Pipe Energy Dissipator, Welded Steel Pipe, Jacked Welded Steel Pipe, Debris Rack-Drainage Gate, Reinforced Concrete Sewer Pipe, Clay Sewer Pipe, Asbestos-Cement Sewer Pipe, Cast Iron Sewer Pipe, Sewer Manhole, Fencing, Signal & Lighting, Bottom Dump Trucking, Flat Bed Trucking**

Bid Documents may be obtained from the District Secretary's Office, San Francisco Bay Area Rapid Transit District, in person on the 23rd Floor at 300 Lakeside Drive, Oakland, California 94612, or by mail at P.O. Box 12688, Oakland, California 94604-2688. Documents may also be viewed at Shimmick Construction's Office by appointment only: 8201 Edgewater Drive, Suite 202, Oakland, CA 94621; Phone (510) 777-5000.

Subcontractors and Suppliers interested in this project may contact Matt Azzi by phone at (510) 777-5038.

100% Performance and Payment bonds with a surety company subject to approval of Shimmick Construction Company, Inc. are required of subcontractors for this project. Shimmick Construction will pay bond premium up to 1.5%. Subcontractors will be required to abide by terms and conditions of the AGC Master Labor Agreements and to execute an agreement utilizing the latest SCCI Long Form Standard Subcontract incorporating prime contract terms and conditions, including payment provisions. Shimmick Construction's listing of a Subcontractor is not to be construed as an acceptance of all of the Subcontractor's conditions or exceptions included with the Subcontractor's price quote. Shimmick Construction requires that Subcontractors and Suppliers price quotes be provided at a reasonable time prior to the bid deadline to enable a complete evaluation. For assistance with **bonding, insurance or lines of credit contact Scott Fairgrieve at (510) 777-5000.**

Shimmick Construction Company Inc.

8201 Edgewater Drive, Suite 202 • Oakland, CA 94621

Phone (510) 777-5000 • Fax (510) 777-5099

An Equal Opportunity Employer

DeSilva Gates Construction, L.P.

is soliciting for DBEs

**FOR CONSTRUCTION ON STATE HIGHWAY IN
SACRAMENTO COUNTY NEAR ANTIOCH
FROM 1.2 MILES SOUTH OF SHERMAN ISLAND
LEVEE ROAD TO WEST SHERMAN ISLAND ROAD,
CONTRACT NO. 03-3F6604,
FEDERAL AID PROJECT ACNH-P160(023)**

**OWNER: STATE OF CALIFORNIA
DEPARTMENT OF TRANSPORTATION
1727 30th Street, Bidder's Exchange, MS 26,
Sacramento, CA 95816**

BID DATE: DECEMBER 17, 2014 @ 2:00 P.M.

We hereby encourage responsible participation of local Business Enterprises, and solicit their subcontractor or materials and/or suppliers quotation for the following types of work including but not limited to:

AC DIKE, CLEARING AND GRUBBING/DEMOLITION, CONSTRUCTION AREA SIGNS, CRACK SEALING, EROSION CONTROL, GUARDRAIL, INERTIAL PROFILOGRAPH, ROADSIDE SIGNS, RUMBLE STRIP, STRIPING, SWPPP/LEAD PLANS, VEGETATION CONTROL, TRUCKING, WATER TRUCKS, STREET SWEEPING, RUBBERIZED HMA (OPEN GRADE) MATERIAL, RUBBERIZED HMA (GAP GRADE) MATERIAL

100% Performance and Payment Bonds may be required for full amounts of the subcontract price. Surety company will have to be approved by DeSilva Gates Construction, L.P. DeSilva Gates Construction, L.P. will pay bond premium up to 2%. Subcontractors must possess current insurance and worker's compensation coverage meeting DeSilva Gates Construction, L.P.'s requirements. Please call if you need assistance in obtaining bonding, insurance, equipment, materials and/or supplies. Plans and specifications are available for review at our Dublin office.

DESILVA GATES CONSTRUCTION, L.P.

11555 Dublin Boulevard

P.O. Box 2909

Dublin, CA 94568-2909

(925) 829-9220 / FAX (925) 803-4263

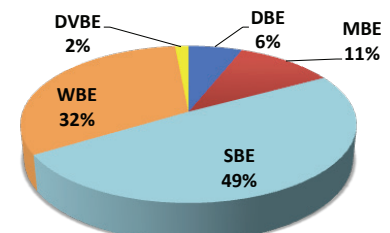
Estimator: Steve Lippis

Website: www.desilvagates.com

An Equal Opportunity Employer

AUDIENCE PROFILE

Small Business Exchange, Inc.



Advertise with the Small Business Exchange

Utilize SBE's TARGET DISTRIBUTION to reach the DBEs, SBEs, DVBEs, MBEs, and OBEs that match the trades and goods you need. www.sbeinc.com

California Sub-Bid Request Ads

REQUESTING SUB-QUOTES FROM
QUALIFIED SBE SUBCONTRACTORS/
SUPPLIERS FOR:

**Light Rail Efficiency Project:
Mountain View Phase 2
Contract: C835 (14139)
Owner: Santa Clara Valley
Transportation Authority
Engineers' Estimate: \$8,500,000.**

REVISED BID DATE: December 9, 2014 @ 2:00 PM

Items of work include but are not limited to: Traffic Control, Survey, Trucking, Erosion Control, SWP Plan, Clear & Grub, Minor Concrete, Striping, Fence, Prefab Sound Wall, Railroad Track Work, Electrical and Landscape.

Granite Rock Company 'Graniterock' is signatory to Operating Engineers, Laborers, Teamsters, Carpenters and Cement Masons unions. 100% performance and payment bonds will be required from a qualified surety company for the full amount of the subcontract price. Bonding assistance is available. Graniterock will pay bond premium up to 1.5%. In addition to bonding assistance, subcontractors are encouraged to contact Graniterock Estimating with questions regarding obtaining lines of credit, insurance, equipment, materials and/or supplies, or with any questions you may have. Subcontractors must possess a current contractor's license, insurance and worker's compensation coverage. Subcontractors will be required to enter into our standard contract. Graniterock intends to work cooperatively with all qualified firms seeking work on this project. Granite Rock Company is an equal opportunity employer.

Granite Rock Company

120 Granite Rock Way, San Jose, CA 95136
Phone (408) 574-1400 Fax (408) 365-9548

Contact: Rob Snyder

Email: estimating@graniterock.com

We Are An Equal Opportunity Employer

REQUESTING SUB-QUOTES FROM
QUALIFIED DBE SUBCONTRACTORS/
SUPPLIERS FOR:

**Milpitas Station Surface Parking and Roadway
Contract: C740 (13002F)
Owner: Santa Clara Valley
Transportation Authority
Engineers' Estimate: \$6,000,000.
BID DATE: December 11, 2014 @ 2:00 PM**

Items of work include but are not limited to: Erosion Control, Fencing, Construction Area Signs, Landscape, Minor Concrete, Striping, Electrical, Underground, Trucking, Survey, Brick Pavers and SWP Plan.

Granite Rock Company 'Graniterock' is signatory to Operating Engineers, Laborers, Teamsters, Carpenters and Cement Masons unions. 100% performance and payment bonds will be required from a qualified surety company for the full amount of the subcontract price. Bonding assistance is available. Graniterock will pay bond premium up to 1.5%. In addition to bonding assistance, subcontractors are encouraged to contact Graniterock Estimating with questions regarding obtaining lines of credit, insurance, equipment, materials and/or supplies, or with any questions you may have. Subcontractors must possess a current contractor's license, insurance and worker's compensation coverage. Subcontractors will be required to enter into our standard contract. Graniterock intends to work cooperatively with all qualified firms seeking work on this project. Granite Rock Company is an equal opportunity employer.

Granite Rock Company

120 Granite Rock Way • San Jose, CA 95136
Phone (408) 574-1400 • Fax (408) 365-9548

Contact: Paul Brizzolara

Email: estimating@graniterock.com

We Are An Equal Opportunity Employer

Granite Rock Company is requesting sub-bids from qualified DBE & SBE Subcontractors/Suppliers for:

**Project Owner: San Francisco Bay Area
Rapid Transit District - BART
Project Description: The Construction of Hayward Maintenance Complex Project Site, Track and Systems
Contract No. 01RQ-120
Location: Hayward
Bid Date: 12/16/14 @ 2:00 p.m.
Engineer's Estimate \$23,000,000**

Note: Qualified firms must be located in the BART Market Area of Alameda, Contra Costa, San Francisco & San Mateo Counties.

Items of work include but are not limited to: Fencing, Clear & Grub including Tree Removal, Underground Utilities including Horizontal Boring, SWPPP items including Bioswale, Electrical, Train Rail Installation (trackwork), Train Control System, Structural Concrete Work (Retaining Wall), Earthwork, Trucking & Hauling, AC Sawcutting, AC Milling & Grinding, Hydroseeding, Soundwall, CIDH Piles, Pile Cap, Rebar, Striping & Signs, Concrete Barrier, & Masonry Walls. Plans and Specs are available in our San Jose/Watsonville offices. Granite Rock Company 'Graniterock' is signatory to Operating Engineers, Laborers, Teamsters, Carpenters and Cement Masons unions. 100% performance and payment bonds will be required from a qualified surety company for the full amount of the subcontract price. Bonding assistance is available. Graniterock will pay bond premium up to 1.5%. In addition to bonding assistance, subcontractors are encouraged to contact Graniterock Estimating with questions regarding obtaining lines of credit, insurance, equipment, materials and/or supplies, or with any questions you may have. Subcontractors must possess a current contractor's license, insurance and worker's compensation coverage. Subcontractors will be required to enter into our standard contract. Graniterock will break down items of work to facilitate DBE/SBE participation. Granite Rock Company is an Equal Opportunity Employer.

Granite Rock Company

120 Granite Rock Way • San Jose, CA 95136
Phone: (408) 574-1400 • Fax: (408) 365-9548

Email: estimating@graniterock.com

Contact Person: Bob Williams

SHOP Marketplace Premiums Flat in 2015

Continued from page 1

the SHOP Marketplace in 2015, businesses can choose from 25 different plans.

The small increase in costs for low-cost plans on the SHOP Marketplace in 2015 is far below the 7.3 percent average annual growth in premiums for family coverage seen by small employers over the decade prior to the Affordable Care Act, as calculated using data from the Kaiser Family Foundation. While this historical growth rate is not precisely comparable to the SHOP Marketplace premium changes reported here since these changes are not market-wide enrollment-weighted averages, the wide gulf nevertheless helps to put this year's changes in context.

The SHOP Marketplace is not the only setting in which health insurance premiums are growing unusually slowly. Recent analysis has found that premiums for low-cost plans on the individual Mar-

ketplaces will rise only modestly in 2015. Data for 2014 released earlier this fall by the Kaiser Family Foundation found that the average premium for employer-based family coverage rose just 3 percent in 2014, tied for the smallest increase in record. This slow premium growth likely reflects in part the broader slowdown in health care cost growth in recent years, which is thanks in part to reforms in the Affordable Care Act. In the case of the SHOP Marketplace and the individual Marketplaces, the slow growth may also reflect the role of the Marketplaces themselves in facilitating competition. Small business owners interested in finding a 2015 plan that meets the needs of their business and their employees -- and seeing whether they are eligible for a tax credit to help cover their premiums -- can explore their options at HealthCare.gov.

Need coverage? Go to HealthCare.gov to find a plan that works for you. Already covered? Commit

to help someone else get covered at www.whitehouse.gov/get-covered.

Methodological note: This analysis uses publicly-available data on plan offerings on the SHOP Marketplaces in 2014 and 2015 for States where the Federal government operated the SHOP Marketplace in both years; these data are available for download from data.HealthCare.gov. For silver and gold plans, the premium analysis excludes five counties where plans were not available in 2014; for bronze plans, the analysis excludes a somewhat larger number of counties where plans were not available in one or both years. Platinum plans were omitted from this analysis because they are not available in most areas. Averages are weighted by county population in 2013, as estimated by the Census Bureau.

Source: U.S. SBA

California Sub-Bid Request Ads

DeSilva Gates Construction, L.P.
is soliciting for DBEs

FOR CONSTRUCTION ON STATE HIGHWAY IN SACRAMENTO COUNTY IN AND NEAR ISLETON FROM ROUTE 12 TO 0.5 MILE NORTH OF ROUTE 220, CONTRACT NO. 03-2F9904, FEDERAL AID PROJECT ACNH-P160(022)

**OWNER: STATE OF CALIFORNIA
DEPARTMENT OF TRANSPORTATION
1727 30th Street, Bidders' Exchange, MS 26,
Sacramento, CA 95816**

BID DATE: DECEMBER 3rd, 2014 @ 2:00 P.M.

We hereby encourage responsible participation of local Business Enterprises, and solicit their sub-contractor or materials and/or suppliers quotation for the following types of work including but not limited to:

AC DIKE, COLD PLANE, CONSTRUCTION AREA SIGN, CRACK SEALING, ELECTRICAL, GUARDRAIL, ROADSIDE SIGNS, RUMBLE STRIP, STRIPING, SWPPP PLAN, TRUCKING, WATER TRUCKS, STREET SWEEPING, RUBBERIZED HMA (GAP GRADE) MATERIAL.

100% Performance and Payment Bonds may be required for full amounts of the subcontract price. Surety Company will have to be approved by DeSilva Gates Construction, L.P. DeSilva Gates Construction, L.P. will pay bond premium up to 2%. Subcontractors must possess current insurance and worker's compensation coverage meeting DeSilva Gates Construction, L.P.'s requirements. Please call if you need assistance in obtaining bonding, insurance, equipment, materials and/or supplies. Plans and Specifications are available for review at our Dublin office.

DESILVA GATES CONSTRUCTION, L.P.

11555 Dublin Boulevard
P.O. Box 2909
Dublin, CA 94568-2909
(925) 829-9220 / FAX (925) 803-4263
Estimator: Steve Lippis
Website: www.desilvagates.com
An Equal Opportunity Employer

Visit www.sbeinc.com
to download the latest SBE
Newspaper and Newsletter



REQUEST FOR QUALIFIED/CERTIFIED DBE SUBCONTRACTORS AND SUPPLIERS

**City of Fremont - Project No. 8460 (PWC)
Niles Blvd Overhead Bridge Replacement Project
Fremont, CA
Bid Date: December 9th, 2014 at 2:00 PM
DBE Goal 8%**

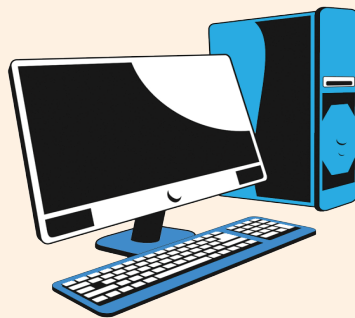
Items of work available but not limited to: CAS/Roadway Signs, Bridge Demolition, Clear & Grub, Erosion Control, Landscaping/Irrigation, AC Paving, Cold Plane AC, CIDH, Joint Seal Assembly, Post Tensioning, Rebar, AC Dike or curbs, Underground Utilities, Fencing, Metal Railing, MBGR, Bridge Concrete Barrier, Striping, Electrical, Minor Concrete, Masonry, Aggregates (Class 1 ASB, Class 2 AB, Rip Rap & Import Borrow R-40), Ready Mix, Concrete Pumping, Concrete Piling, Steel Pipe Pile, Welded Steel Pipe, Underground Pipe Products (RCP & ACP), Misc. Iron & Steel, Misc. Metals, Trucking, SWPPP Plan, SWPPP Materials, Lead Compliance Plan, Geotextile Materials, Bridge Bearings, Underground Precast, Street Sweeping, Traffic Control, Vibration Monitoring & Surveying.

Non-DBE Subs/Suppliers: You will be expected to carry a proportionate percentage of 2nd-tier DBE goal participation with your quote. 2nd-tier DBE goal participation will be evaluated with your price.

Performance & Payment Bonds by admitted surety, naming prime contractor as the obligee, in full amount of the subcontractor's bid, subject to approval by Flatiron required. Bonding and insurance assistance is available upon request. Flatiron will pay bond premium up to 2.0%. Worker's Compensation Waiver of Subrogation is required. Please contact Flatiron for any bonding and insurance needs, or if any other assistance is needed to facilitate your participation on this project. Flatiron is signatory to the Operators, Laborers, Carpenters, Cement Masons, Pile Drivers & Iron Workers Unions. Quotations must be valid for same duration as specified by owner for contract award. Plans and specs are available for purchase from ARC in Milpitas by calling 408-262-3000. Plans & Specs are available for viewing in Flatiron's Benicia office by appointment. Flatiron will grant you access to our FTP site for free download and viewing upon request. Please call for an appointment to view in our office or FTP Site access. Please contact Lillian Simon at LiSimon@FlatironCorp.com. Quotes can be sent directly to our BID FAX at 707-746-1603.



**2100 Goodyear Rd. • Benicia, CA 94510
Phone (707) 742-6000 • Bid Fax (707) 746-1603
WE ARE AN EQUAL OPPORTUNITY EMPLOYER**



FIND
Subcontractors, Vendors,
and Suppliers

REACH
Diverse Audiences of Various
Ethnicity, Race, & Gender



ADVERTISE
Sub-Bid Request Ad

SBE Newspaper boasts a weekly readership of **75,000**
SBE Delivers competent, competitive, and certified
subcontractors, vendors, and suppliers

California Sub-Bid Request Ads

REQUEST FOR DBE SUBCONTRACTORS AND SUPPLIERS FOR:

**Milpitas Station Surface Parking and Roadway
Contract C740 (13002F)
Santa Clara Valley Transit Authority
BID DATE: December 11, 2014 @ 2:00 PM**

We are soliciting quotes for (including but not limited to): Trucking, Construction Staking, SWPPP, Flagging, Sweeping, Temp. Hydraulic Mulch, Temp. Fence, Construction Area Signs, Clearing & Grubbing, Develop Water Supply, Erosion Control, Irrigation, Import Topsoil, Bio Retention Basin, Roadside Sign, Underground, Rock Slope Protection, Minor Concrete, Detectable Warning Surface, Misc. Iron & Steel, Bollard, Survey Monument, Striping & Marking, Signals & Lighting, Fire Hydrant, Minor Structures, Porous Paving System, Bollards, Underground, Security Infrastructure and Construction Materials

O.C. Jones & Sons, Inc.

1520 Fourth Street • Berkeley, CA 94710 • Phone: 510-526-3424 • FAX: 510-526-0990

Contact: Greg Souder

An Equal Opportunity Employer

100% Performance & Payment Bonds may be required. Worker's Compensation Waiver of Subrogation required. Please call OCJ for assistance with bonding, insurance, necessary equipment, material and/or supplies. OCJ is willing to breakout any portion of work to encourage DBE Participation. Plans & Specs are available for viewing at our office on the VTA's website.

REQUEST FOR DBE SUBCONTRACTORS AND SUPPLIERS FOR:

**Hwy 160 RHMA, MBGR, Excavation
Sacramento County near Antioch
Caltrans #03-3F6604
BID DATE: December 17, 2014 @ 2:00 PM**

We are soliciting quotes for (including but not limited to): Trucking, Lead Compliance Plan, Construction Area Signs, Traffic Control System, Portable Changeable Message Sign, WPCP, Treated Wood Waste, Cold Plane AC, Clearing & Grubbing, Shoulder Backing, Imported Borrow, Subgrade Enhancement Geotextile Class B2, Erosion Control, Compost, Crack Treatment, Rumble Strip, Data Core, AC Dike, Tack Coat, Delineator, Highway Post Marker, Object Marker, Midwest Guardrail System, Minor Concrete, Striping & Marking, Vegetation Control (Minor Concrete) and Construction Materials

O.C. Jones & Sons, Inc.

1520 Fourth Street • Berkeley, CA 94710 • Phone: 510-526-3424 • FAX: 510-526-0990

Contact: Donat Galicz

An Equal Opportunity Employer

100% Performance & Payment Bonds may be required. Worker's Compensation Waiver of Subrogation required. Please call OCJ for assistance with bonding, insurance, necessary equipment, material and/or supplies. OCJ is willing to breakout any portion of work to encourage DBE Participation. Plans & Specs are available for viewing at our office or through the Caltrans Website at www.dot.ca.gov/hq/esc/oe/weekly_ads/index.php.

REQUEST FOR DBE SUBCONTRACTORS AND SUPPLIERS FOR:

**Hwy 160 Isleton
Caltrans #03-2F9904
BID DATE: December 3, 2014 @ 2:00 PM**

We are soliciting quotes for (including but not limited to): Trucking, Lead Compliance Plan, Construction Area Signs, Traffic Control System, Portable Changeable Message Sign, Prepare WPCP, Treated Wood Waste, Reconstruct Guardrail, Cold Plane AC, Shoulder Backing, Crack Treatment, AC Dike, Rumble Strip, Tack Coat, Delineator, Object Marker, Striping & Marking, Traffic Monitoring System, Modify Signal and Construction Materials

O.C. Jones & Sons, Inc.

1520 Fourth Street • Berkeley, CA 94710 • Phone: 510-526-3424 • FAX: 510-526-0990

Contact: Jean Sicard

An Equal Opportunity Employer

100% Performance & Payment Bonds may be required. Worker's Compensation Waiver of Subrogation required. Please call OCJ for assistance with bonding, insurance, necessary equipment, material and/or supplies. OCJ is willing to breakout any portion of work to encourage DBE Participation. Plans & Specs are available for viewing at our office or through the Caltrans Website at www.dot.ca.gov/hq/esc/oe/weekly_ads/index.php.

REQUEST FOR DBE SUBCONTRACTORS AND SUPPLIERS FOR:

**Niles Boulevard Overhead
Bridge Replacement Project
Fox Avenue to Linda Drive
City of Fremont
City Project No. 8460 (PWC)
BID DATE: December 9, 2014 @ 2:00 PM**

We are soliciting quotes for (including but not limited to): Trucking, Engineer's Field Office Facilities, SWPPP, Rain Event Action Plan, Storm Water Sampling, Analysis and Annual Report, Construction Area Signs, Traffic Control System, Abandon Culvert, Adjust Monument to Grade, Cold Plane AC, Bridge Removal, Temporary Erosion Control, Clearing & Grubbing, Lead Compliance Plan, Structure Excavation (Bridge), Structure Backfill (Bridge), Imported Borrow, Amended Soil, AC Dike, Tack Coat, Permanent Steel Casing, CIDH Concrete Piling, Furnish Piling, Prestressing Cast-In-Place Concrete, Structural Concrete, Minor Concrete (Minor Structure), Modular Block Wall, Joint Seal Assembly, Bar Reinforcing Steel, Roadside Signs, Underground, Drainage Inlet Marker, Rock Slope Protection, Minor Concrete (Curb and Gutter), Misc. Iron & Steel, Misc. Metal, Survey Monument, Delineator, Object Marker, MBGR, Chain Link Railing, Pedestrian Barricade, Concrete Barrier, Transition Railing, Striping & Marking, Electrical, Planting & Irrigation and Construction Materials

O.C. Jones & Sons, Inc.

1520 Fourth Street • Berkeley, CA 94710 • Phone: 510-

526-3424 • FAX: 510-526-0990

Contact: Jean Sicard

An Equal Opportunity Employer

100% Performance & Payment Bonds may be required. Worker's Compensation Waiver of Subrogation required. Please call OCJ for assistance with bonding, insurance, necessary equipment, material and/or supplies. OCJ is willing to breakout any portion of work to encourage DBE Participation. Plans & Specs are available for viewing at our office.



Looking for
Subcontractors, Vendors,
and Suppliers?

Call 1-800-800-8534

or visit us at www.sbeinc.com

Advertise your Sub-Bid Requests in the
Small Business Exchange.

With a monthly readership of 75,000,
SBE reaches a diverse audience, cutting
across ethnic and gender lines as well as
traditional industry segments.

Public Legal Notices

UC SAN FRANCISCO MEDICAL CENTER

ANNOUNCEMENT TO PREQUALIFIED BIDDERS AND ADVERTISEMENT FOR BIDS

Subject to conditions prescribed by the University of California, San Francisco Medical Center, sealed bids for a Lump Sum Contract awarded on the basis of Best Value competitive bidding are invited for the following work:

Moffitt Long Hospital Nursing Units L7/M7S, L11, L12 & L15/M15S
Project No.: 13-769 / Contract No.: L00168

Description of Work: Remodel the Long Hospital 7th, 11th, 12th and 15th Floors and Moffitt Hospital 7th and 15th Floor South Wings.

Estimated construction cost: \$ 18,000,000.

The following contractors have been prequalified to bid on this project and the University will ONLY receive bids from the following:

General Contractors

Dome Construction Corporation
 Herrero Builders, Inc.
 Unger Construction Co.
 XL Construction Corporation

PROCEDURES:

Bidders will obtain complete sets of the Bid Documents from the issuing office through the UC SRS (Supplier Registration and Sourcing) system after Bidder has registered with UC SRS System. Bidders are required to register as a new user and complete registration form using LINK: <https://suppliers.sciquest.com/UCOP/>.

Once registered, Bidder can log onto SRS and retrieve Bid Documents by project name and number. Contact Cristina Lindow at Cristina.lindow@ucsf.edu with any UC SRS questions. Subject line of the email should state UC SRS Question.

Complete advertisement can be viewed and may be ordered on line at the following website address: <http://www.ucsfplans.com/>

Bidders must attend a **mandatory** pre-bid conference at on **Friday, December 5, 2014** beginning promptly at **8:00 AM**. For details, see above website address.

The Electrical and Warm-Air Heating, Ventilating & Air-Conditioning (HVAC) must also attend the mandatory Pre-Bid Conference and Pre-Bid Job Walk. Only subcontractors of these trades, C10 and C20, who attend the Mandatory Pre-Bid Conference & Pre-Bid Job Walk shall be able to submit a bid to the Prequalified General Contractors.

Bids will be received using the UC Supplier Registration and Sourcing (SRS) system accessible through: <https://suppliers.sciquest.com/UCOP/>. The submittal of the "Best Value Evaluation Questionnaire" will NOT be submitted through SRS.

Sealed Bids for Lump Sum Best Value will not be accepted after 2:00 PM, Tuesday, January 13, 2015.

The Best Value Evaluation Questionnaire is to be submitted at the Office of Design and Construction, University of California, San Francisco Medical Center, 3333 California Street, Suite 115, San Francisco, CA 94118. Phone: (415) 885-7257 and will not be accepted after 2:00 PM, Tuesday, January 13, 2015.

Prior to the Bid Deadline and after the bid opening, the University may establish a new Bid Deadline no earlier than 24 hours from the prior Bid Deadline, if no material changes are made to the bidding documents, and no earlier than 72 hours if material changes are made. In such event the University will, at a minimum, notify all persons or entities known by the University to have received a complete set of Bidding Documents and who has provided a street address or facsimile number for receipt of any written pre-bid communications.

Every effort will be made to ensure that all persons have equal access to contracts and other business opportunities with the University within the limits imposed by law or University policy. Each Bidder may be required to show evidence of its equal employment opportunity policy. The successful Bidder and its subcontractors will be required to follow the nondiscrimination requirements set forth in the Bidding Documents and to pay prevailing wage at the location of the work.

The work described in the contract is a public work subject to section 1771 of the California Labor Code.

The successful Bidder will be required to have the following California current and active contractor's license at the time of submission of the Bid: GENERAL BUILDING CONTRACTOR, B

THE REGENTS OF THE UNIVERSITY OF CALIFORNIA

University of California,
 San Francisco Medical Center
 November 2014

Candlestick Point in San Francisco Opportunity to Perform Construction Manager for Hunters Point Shipyard – Phase 1 during the development of CANDLESTICK POINT in San Francisco.

Lennar Urban is requesting qualified, interested construction firms to respond to a public request for proposals to perform

Construction Manager for Hunters Point Shipyard – Phase 1 for Candlestick Point Redevelopment

For more information, please visit:
<http://mission.sfgov.org/OCABidPublication/BidDetail.aspx?K=8854>

The Successor to the San Francisco Redevelopment Agency (SFRA) has established the 50% Small Business Enterprise (SBE) Participation goal for Construction Subcontracting.

Respondents are encouraged to check this website regularly for updates.

Pre-Bid Coordination Meeting and Job Walk:
December 4 at 10:00 AM

Lennar Urban

**1 Sansome Street, Suite 3200
 San Francisco, CA 94104**

Proposals must be submitted by
December 18, 2014 @ 2:00 PM (PST).



calottery

California Lottery Invitation for Bid (RFP#50029) Asian Consumer Market Advertising Services

The Lottery is inviting responses from qualified agencies to provide Asian Consumer Market (ACM) advertising and integrated communications services for all Lottery products, with the objective of maximizing net revenue from Lottery sales for the benefit of California public education. The Lottery will consider proposals from partnerships and joint ventures, including creative advertising agencies and media management firms. The initial Contract term will be for five years. The Lottery may extend the term of the Contract under the same terms and conditions for up to two one-year extension options.

The RFP is tentatively scheduled for release the end of November 2014 and will be available to be downloaded on the Lottery website at www.calottery.com under "Vendor Opportunities". **The Lottery will not distribute paper copies of the RFP.** For information contact **Susana Sanchez** by email at ssanchez@calottery.com

CNS#2684244



CONCESSION OPPORTUNITY AT SAN FRANCISCO INTERNATIONAL AIRPORT

San Francisco International Airport has commenced the Request for Bids process for the Banking Center and ATM Lease. Staff invites you to attend the informational conference on December 10, 2014 at 10:00 a.m. at San Francisco International Airport, SFO Business Center, 575 N. McDonnell Road, 2nd Floor. The Lease is intended for the management and operation of a bank on-site and ATMs at San Francisco International Airport. The proposed minimum acceptable bid amount is \$273,000, which will be the successful Bidder's minimum annual guarantee for the first year of the Lease, and a proposed term of seven (7) years.

The RFB document is available online at <http://www.flysfo.com/web/page/about/b2b/conces/>. For additional information, please call Martin E. Farfan, City Hall Fellow Revenue Development and Management, at (650) 821-4513.

CNS#2690676